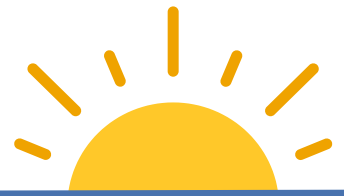


Brunch Buddies



The Brunch Buddies Program is a great way to make a generous contribution of your time and favorite morning recipe. The following guide will help your group plan for a fun time at our House.

WHO CAN VOLUNTEER?

- We love volunteer groups of all sizes! Larger groups are welcome to break into smaller groups to prepare brunch at multiple Houses.
- Volunteers MUST be 16 years of age or older.

WHAT SHOULD I COOK?

- The menu is completely up to you! Some ideas include:

Pancakes	Omelette Bar
French Toast	Bagels
Muffins	Cinnamon Rolls
Fruit	Waffles
- Drinks are optional but always appreciated.

WHAT SHOULD I BRING?

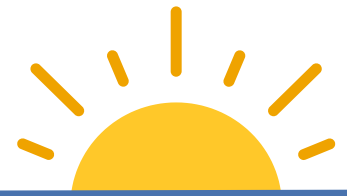
- Participants are required to supply the food, disposable plates/cups/utensils/napkins, and baking materials needed for the meal. (Don't forget spices, salt, pepper, and paper towels!)
- Meal preparation must be done on-site unless prepared in a commercial kitchen and brought in.
- We ask that all brunch groups also provide plastic storage containers to leave the leftovers.

WHAT ELSE SHOULD I KNOW?

- Brunch is served at each House from 10:00AM- 11:00AM on Saturdays, with most groups arriving at 8:30AM to begin prep.
- Brunch is served buffet style.
- We request your group clean up the kitchen and dining room after brunch.
- Our families spend the majority of their time with their children. If they miss a meal, they look forward to returning to the House for leftovers.
- The actual number of family members attending a meal may vary. Our volunteer manager will reach out to you the week of your scheduled date to verify the number of people to expect.
- We understand things happen. We ask that you please provide us with a **cancelation notice 48 hours in advance.**
- Should you need to cancel, please consider ordering takeout for the day. Thank you!



Brunch Buddies



Each of our Houses has slightly different needs and available resources. Please read below to learn more about the Brunch Buddies program at each location.

ROANOKE | 501 E. ROANOKE AVE, PHOENIX, AZ 85004

EQUIPMENT

- 2 traditional range tops, 2 ovens, 2 microwaves
- Outdoor gas grill
- Assorted pots, pans, knives, cooking/serving utensils, assorted counter-top appliances
- Indoor and outdoor patio seating

OTHER CONSIDERATIONS

- Parking: Please park along the 5th Street cul-du-sac or on Roanoke Ave.

CAMBRIDGE | 1980 E. CAMBRIDGE AVE, PHOENIX, AZ, 85006

EQUIPMENT

- 2 traditional range top ovens, 2 microwaves
- Assorted pots and pans, knives, cooking/serving utensils, assorted counter-top appliances
- Indoor dining room and seating

OTHER CONSIDERATIONS

- Parking: Once you have unloaded your food, please park in the parking lot to the east of the House

DOBSON | 2225 W SOUTHERN AVE, MESA, AZ 85202

EQUIPMENT

- 2 traditional range top ovens, 2 microwaves
- Charcoal grill
- Assorted pots and pans, knives, cooking/serving utensils, assorted counter-top appliances
- Indoor and outdoor patio seating

OTHER CONSIDERATIONS

- Parking: Please park in the lot located directly in front of the House.

For questions, please contact our Volunteer Manager, Jen Donnelly at jdonnelly@rmhccnaz.org or (602)798-5093.

